



Setup for Thunderbird
January 16, 2006

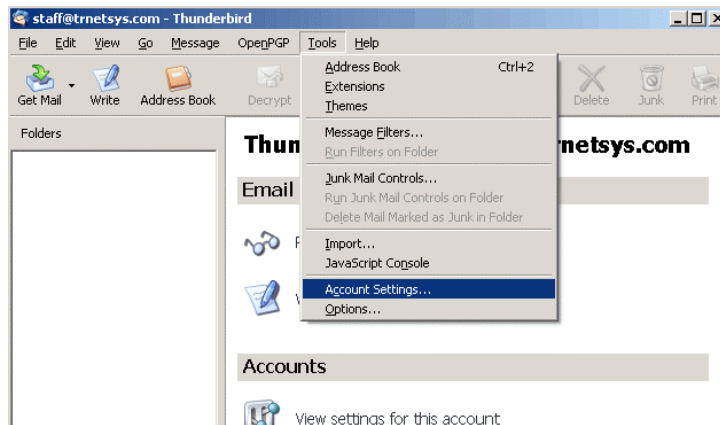
129 Bleachery Blvd, Suite 101
Asheville, NC 28805
(828)-254-9638
www.intervelocity.com

About This Document

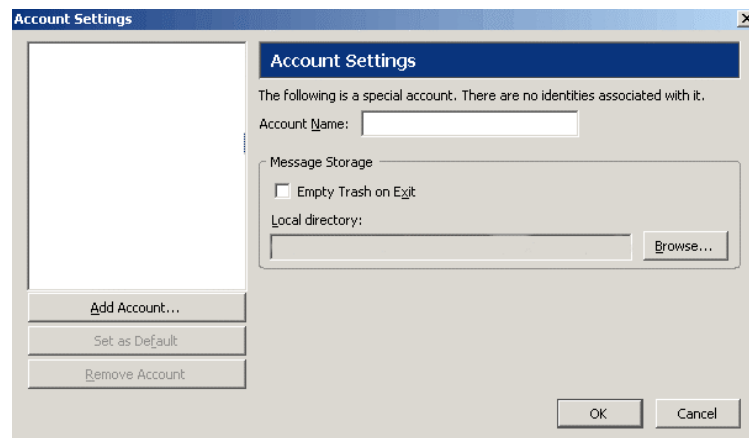
This document is intended to be a reference guide to follow for setting up the Thunderbird mail client to check InterVelocity email accounts. For questions not covered in this document contact InterVelocity support (support@intervelocity.com).

Setup for a new account

- Open up Thunderbird, click on **Tools**, and select **Account Settings...**



- Select **Add Account...** to start the account wizard.



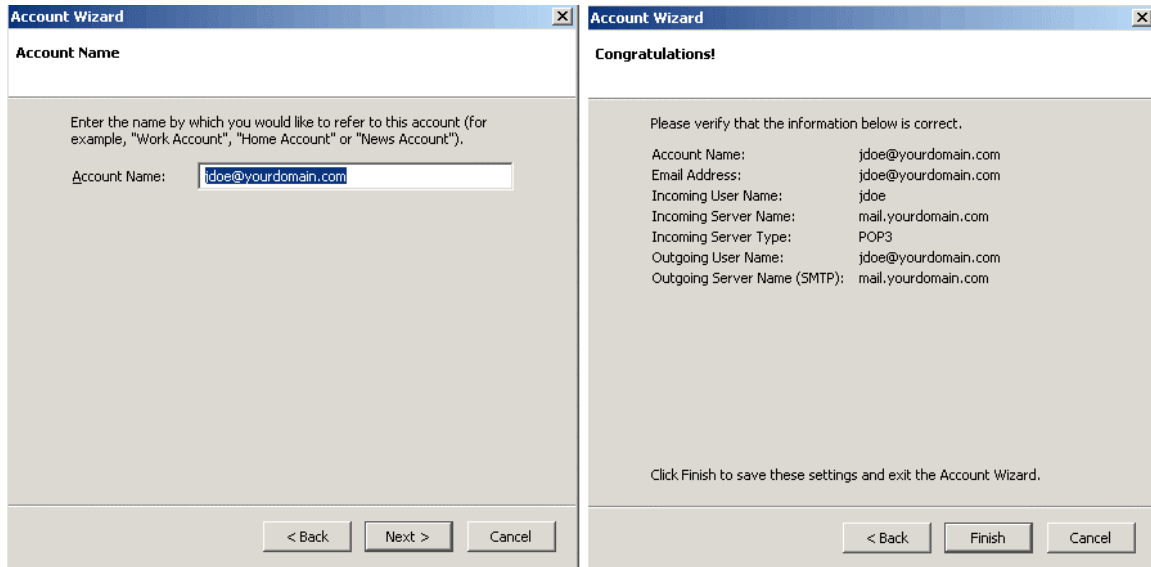
- Select Email account from the list of account types and click **Next**.
- Your Name: Your name, ie John Doe
- E-mail Address: Your full email address, ie jdoe@yourdomain.com

The image shows two side-by-side screenshots of the 'Account Wizard' dialog box. The left window is titled 'New Account Setup' and contains instructions for setting up a Mail or Newsgroup account. It features three radio buttons: 'Email account' (selected), 'RSS News & Blogs', and 'Newsgroup account'. The right window is titled 'Identity' and explains that each account has an identity. It contains two text input fields: 'Your Name' with the value 'John Doe' and 'Email Address' with the value 'jdoe@yourdomain.com'. Both windows have '< Back', 'Next >', and 'Cancel' buttons at the bottom.

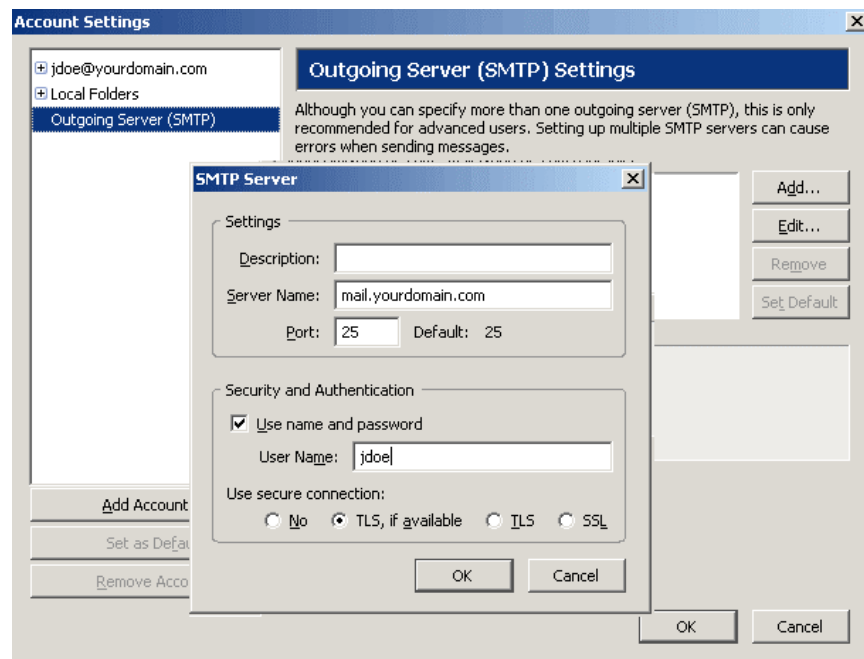
- Select POP as the type of incoming server.
- Incoming mail server (POP3): mail.yourdomain.com
- Incoming User Name: your email name ie, jdoe

The image shows two side-by-side screenshots of the 'Account Wizard' dialog box. The left window is titled 'Server Information' and asks for the type of incoming server. It has two radio buttons: 'POP' (selected) and 'IMAP'. Below, there is a text input field for 'Incoming Server' with the value 'mail.yourdomain.com'. A checkbox for 'Use Global Inbox (store mail in Local Folders)' is checked. The right window is titled 'User Names' and asks for the incoming user name. It has a text input field for 'Incoming User Name' with the value 'jdoe'. Both windows have '< Back', 'Next >', and 'Cancel' buttons at the bottom.

- Account Name: A friendly name for you to see on your display
- Click **Finish** to save the settings and exit the wizard.



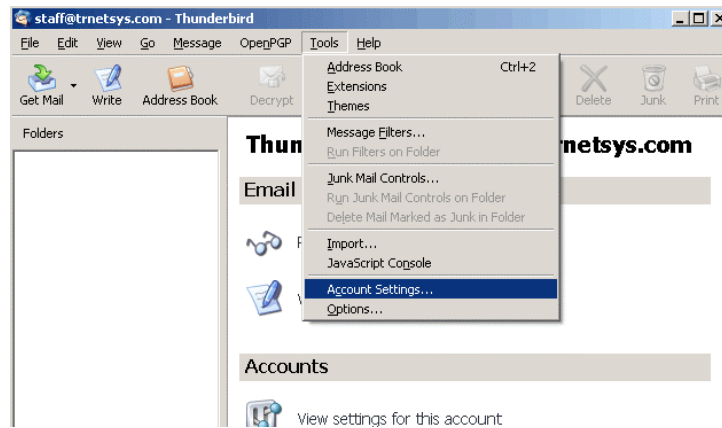
- Highlight the Outgoing Server (SMTP) and click **Add...**



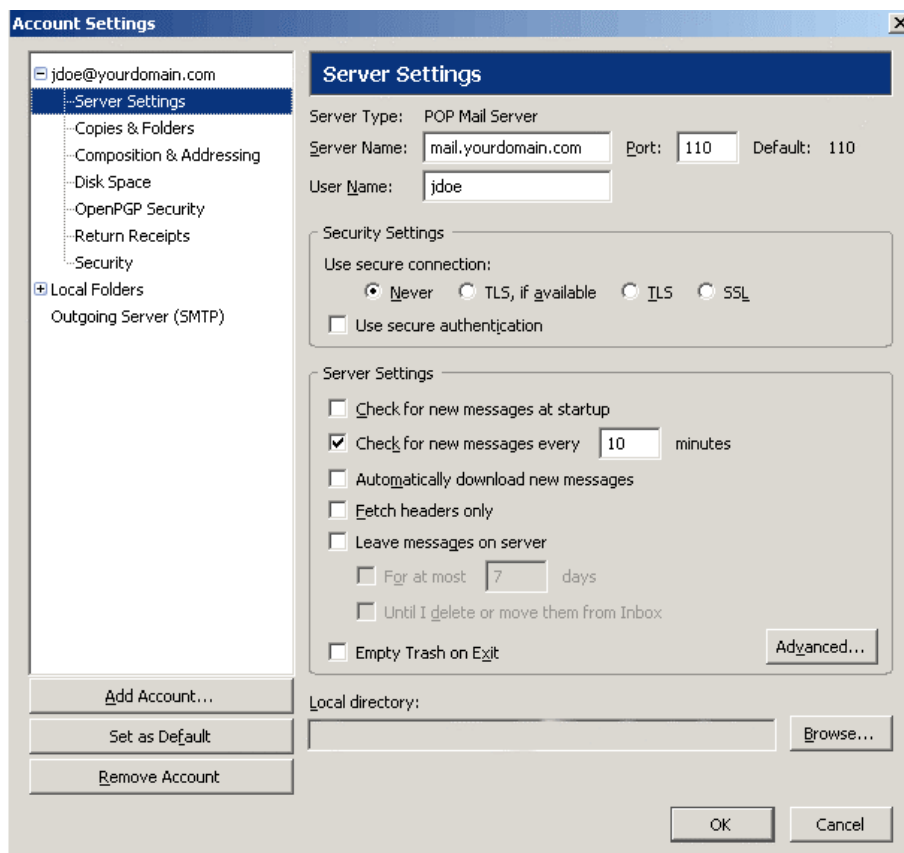
- Server Name: mail.yourdomain.com
- User Name: Your email name, ie jdoe
- **Note:** Some ISP's (BellSouth for example) block outgoing port 25. To fix this, simply change the outgoing port to 2505

Edit an existing account

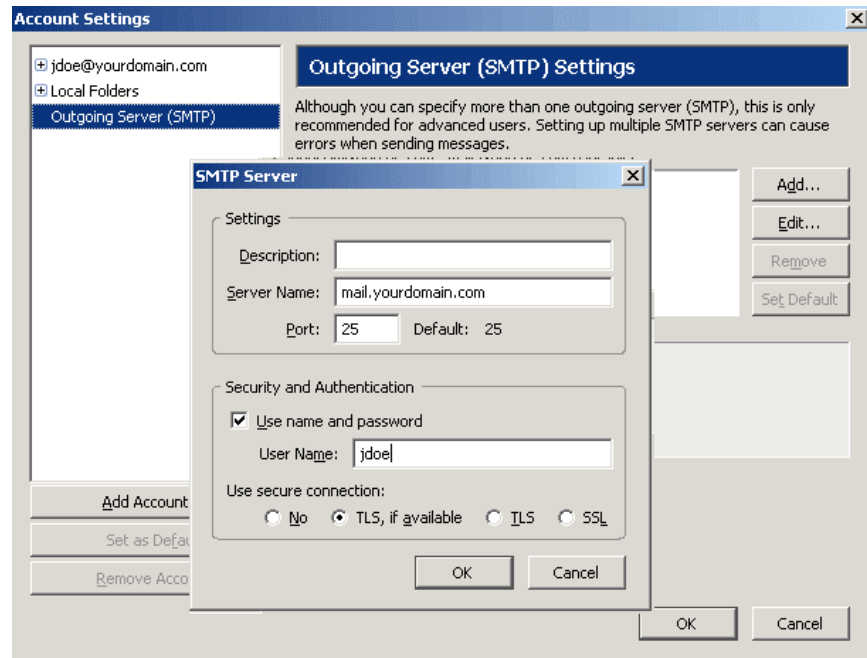
- Open up Thunderbird, click on **Tools**, and select **Account Settings...**



- Expand the tree of the account you wish to edit, highlight **Server Settings** and change **Server Name** to mail.yourdomain.com.



- Highlight the Outgoing Server (SMTP), select you current outgoing server and click **Edit...**



- Server Name: mail.yourdomain.com
- User Name: Your email name, ie jdoe
- **Note:** Some ISP's (BellSouth for example) block outgoing port 25. To fix this, simply change the outgoing port to 2505