



Setup for Entourage
March 28, 2006

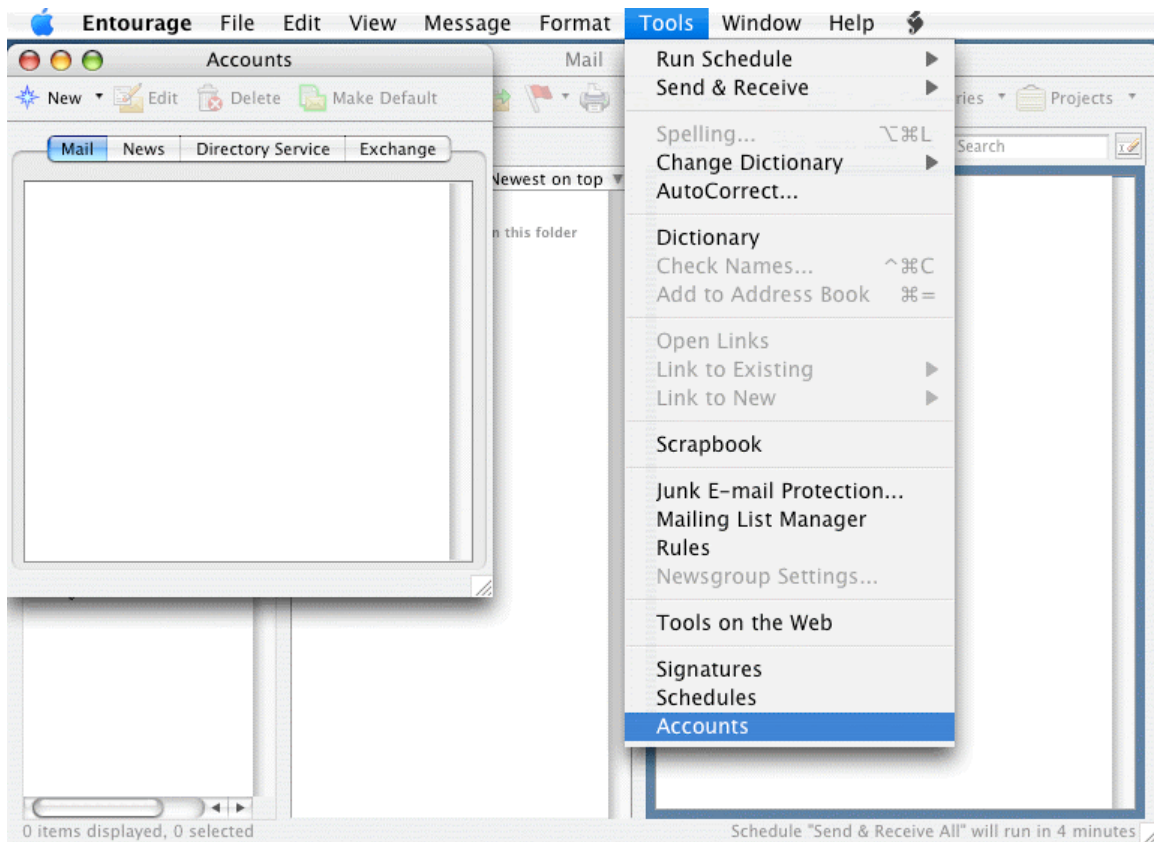
129 Bleachery Blvd, Suite 101
Asheville, NC 28805
(828)-254-9638
www.intervelocity.com

About This Document

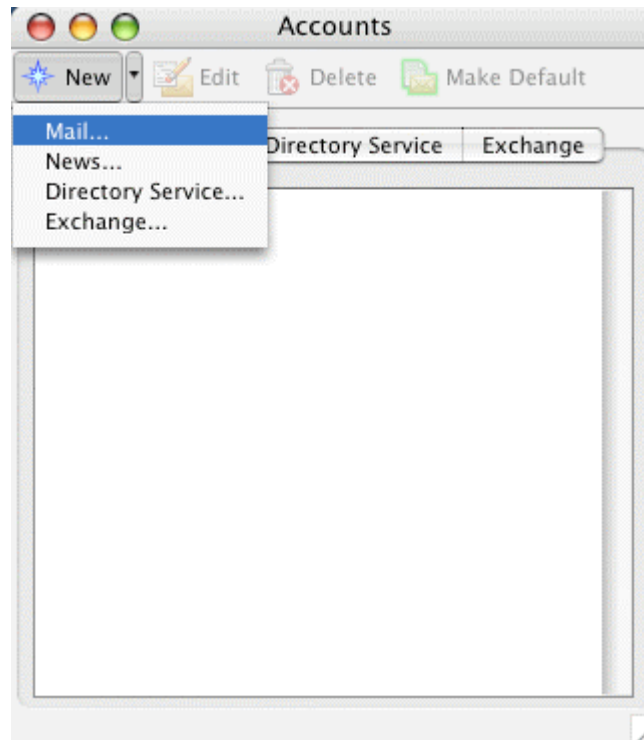
This document is intended to be a reference guide to follow for setting up Entourage to check InterVelocity email accounts. For questions not covered in this document contact InterVelocity support (support@intervelocity.com).

Setup a new e-mail address

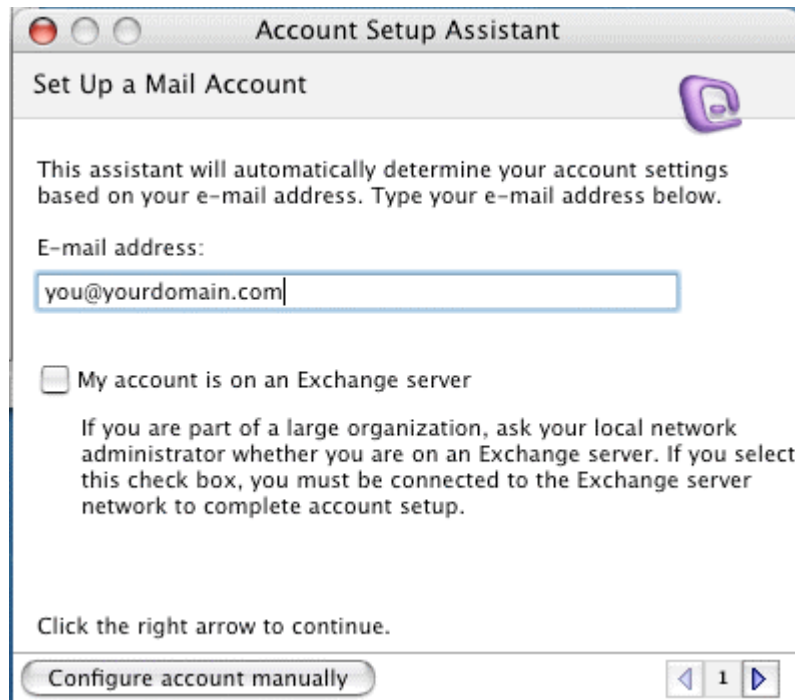
- Open up Entourage, click on **Tools**, and select **Accounts**

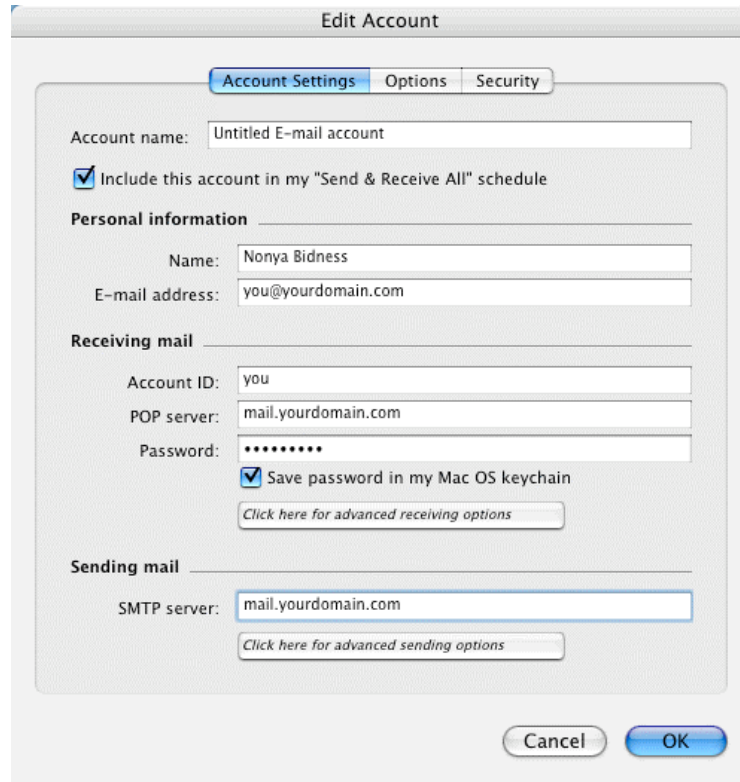


- Click **New** and from the dropdown menu, select **Mail...**

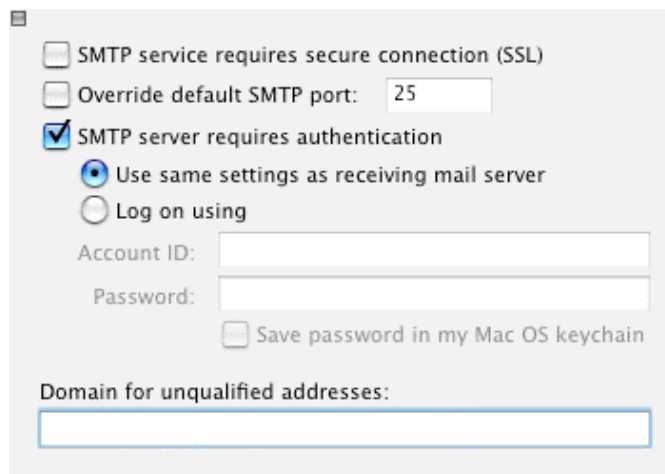


- E-mail address is your e-mail address.
- Click the right arrow to continue





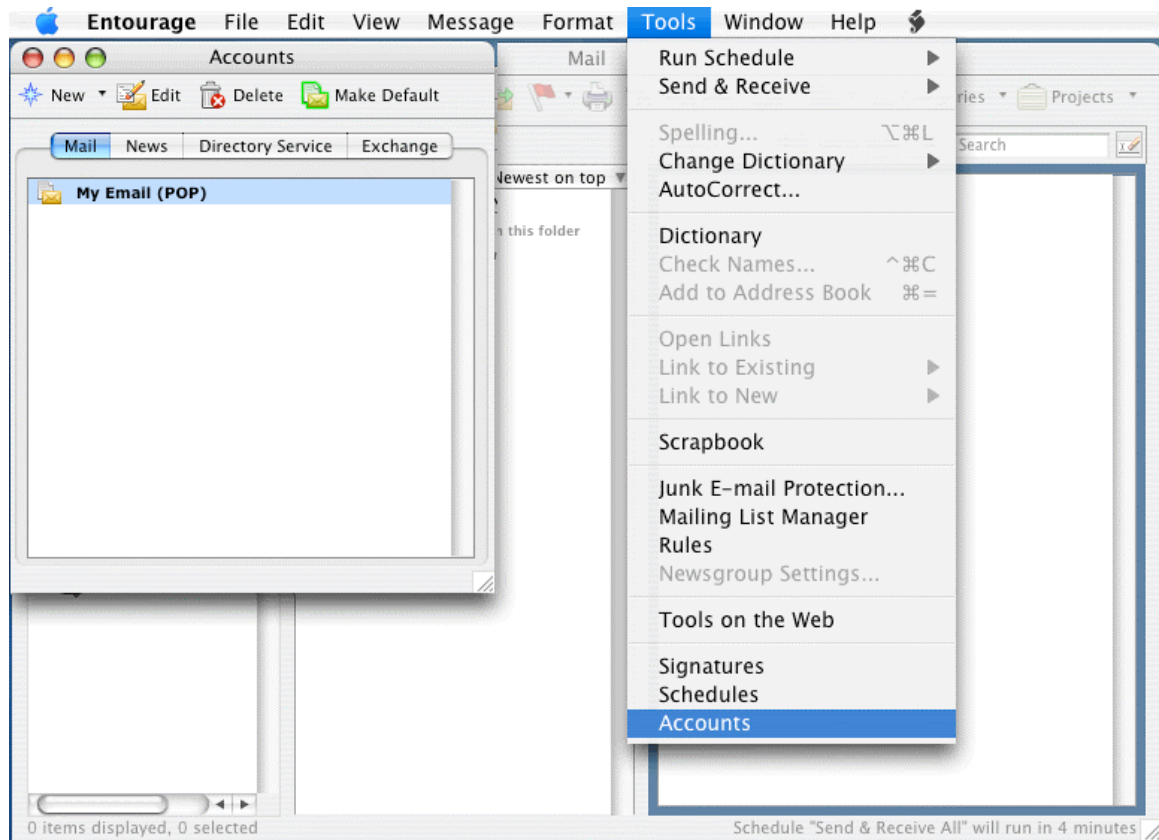
- Incoming Mail Server: *mail.yourdomain.com*
- User Name: your email ID
- Password: your password
- SMTP server: *mail.yourdomain.com*
- Click the button **Click here for advanced sending options**.



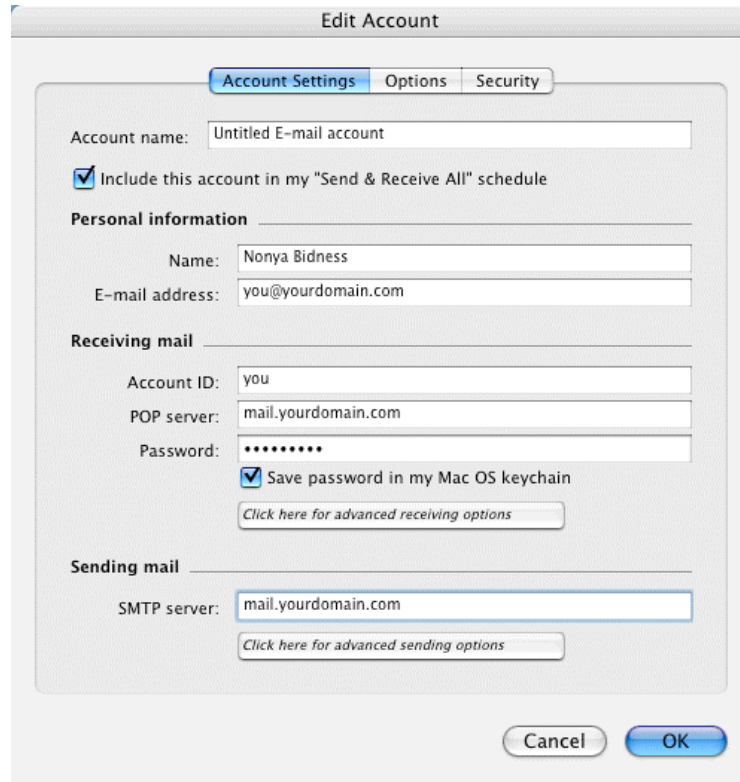
- Check "SMTP server requires authentication".
- Check "Use same settings as receiving mail server", and close the window
- Click **OK**
- **Note:** Some ISP's (BellSouth for example) block outgoing port 25. To fix this, check "Override default SMTP port:" and change it to 2505.

Updating and existing account:

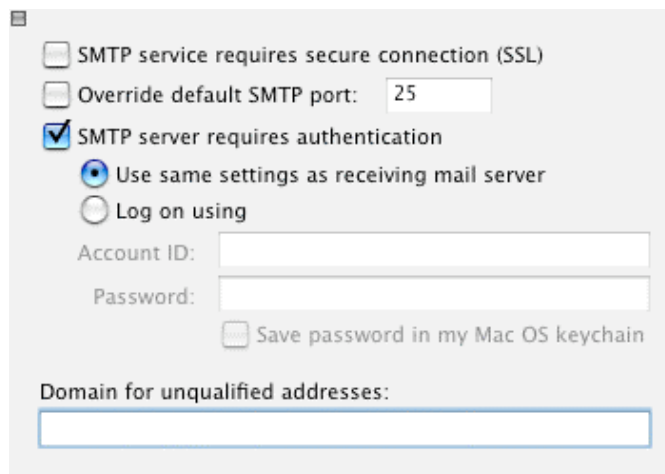
- Open up Entourage, click on **Tools**, and select **Accounts**



- Highlight your E-mail account and click **Edit**.



- Incoming Mail Server: *mail.yourdomain.com*
- User Name: your email ID
- Password: your password
- SMTP server: *mail.yourdomain.com*
- Click the button **Click here for advanced sending options**.



- Check "SMTP server requires authentication".
- Check "Use same settings as receiving mail server", and close the window
- Click **OK**
- **Note:** Some ISP's (BellSouth for example) block outgoing port 25. To fix this, check "Override default SMTP port:" and change it to 2505.